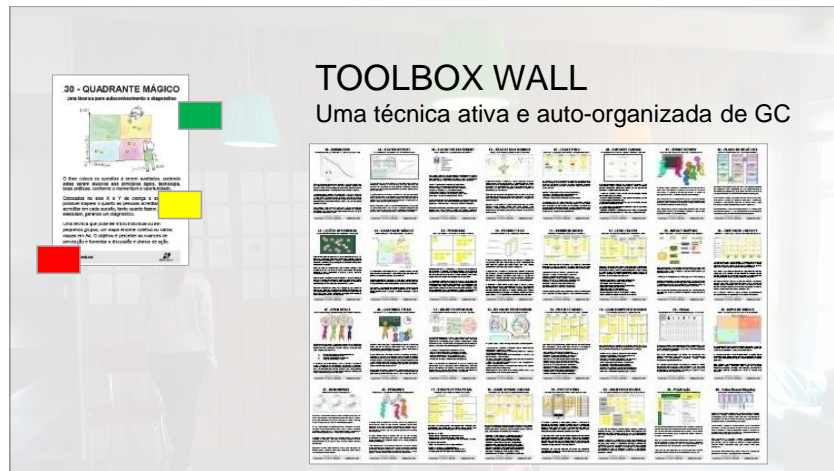
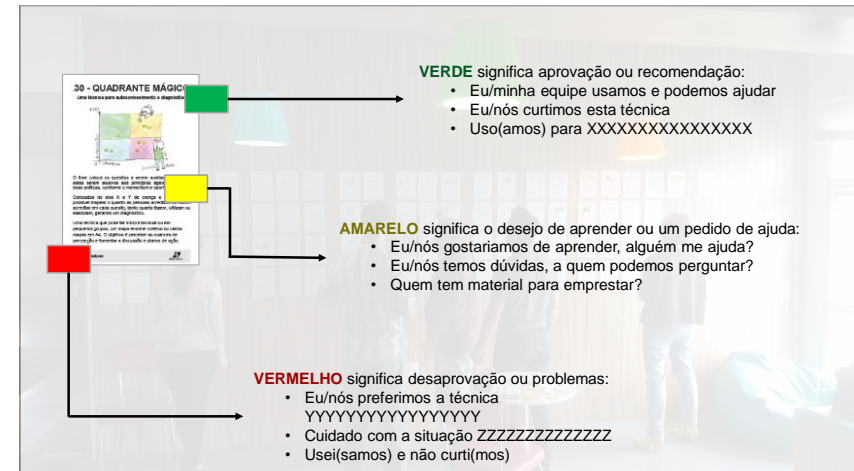


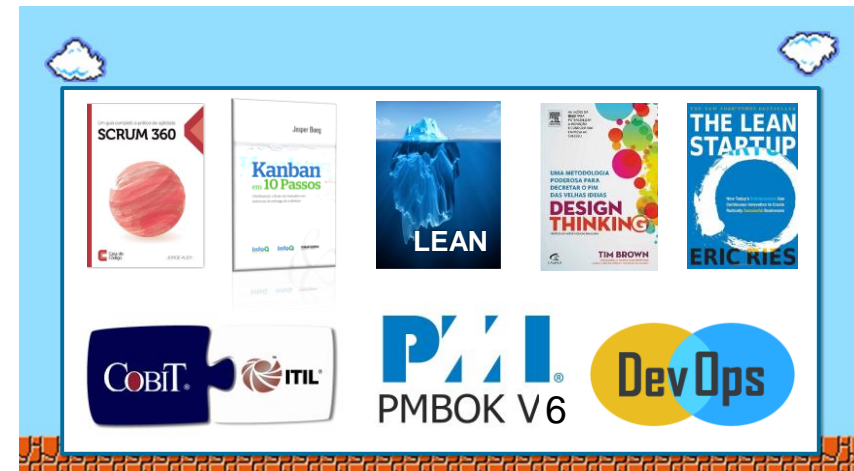
TOOLBOX WALL

Uma técnica ativa e auto-organizada de GC

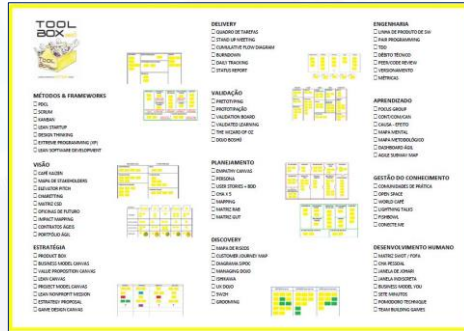


TOOLBOX WALL

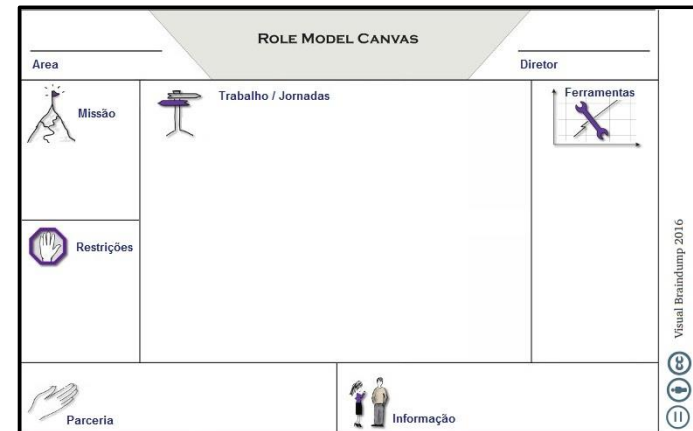
Uma técnica ativa e auto-organizada de GC



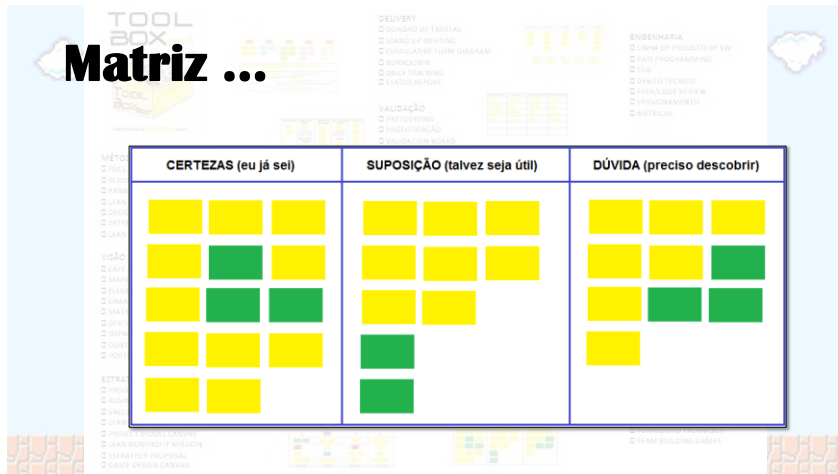
<http://bitly.com/jorgeaudy>



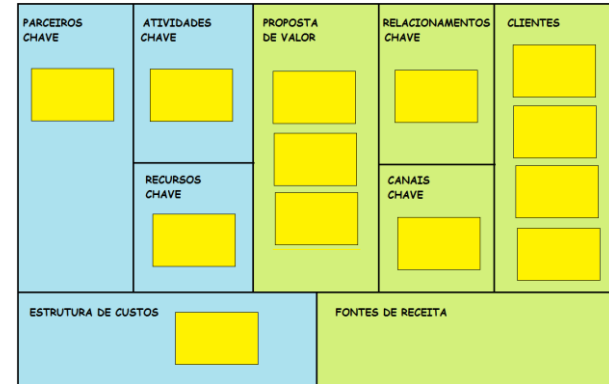
ToolBox é ...



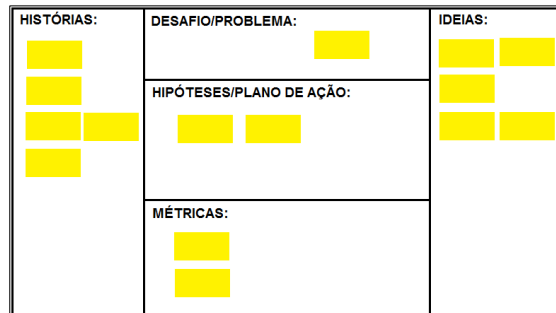
Matriz ...



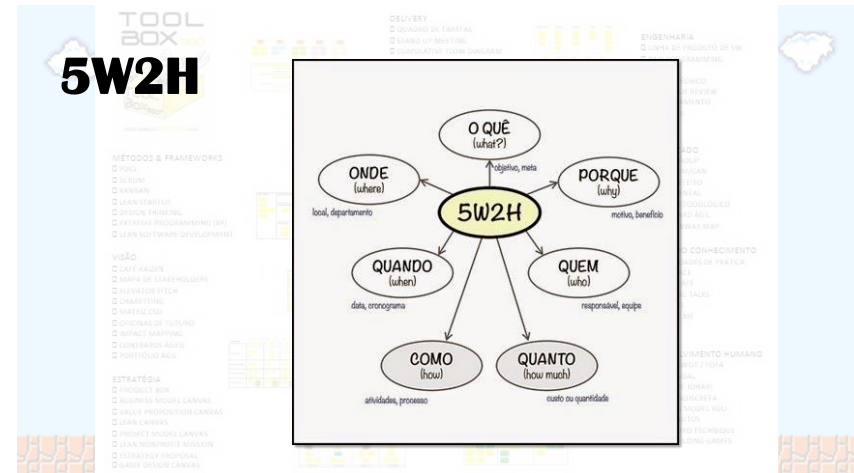
BUSINESS MODEL GENERATION

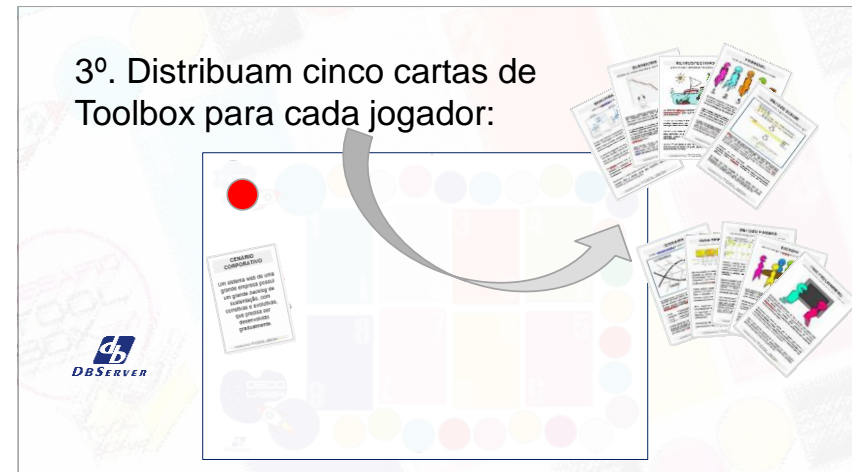
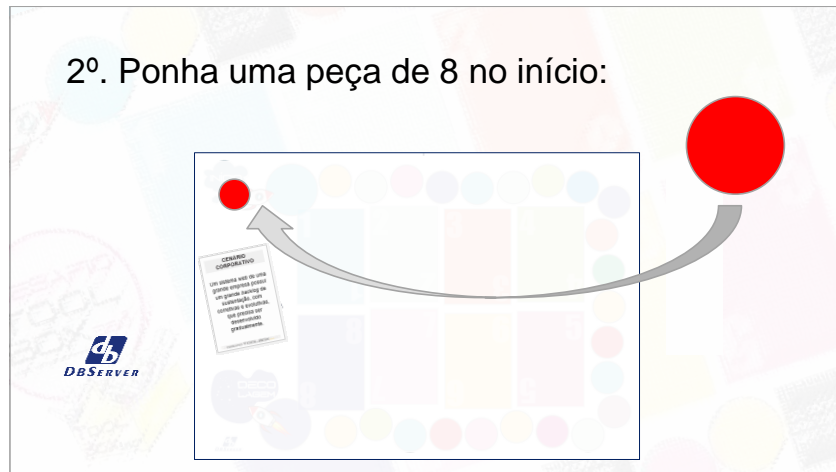
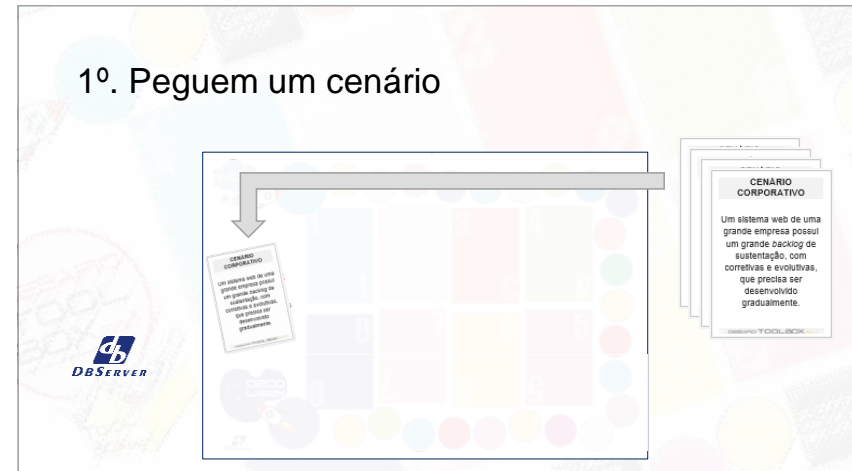


Managing dojo...

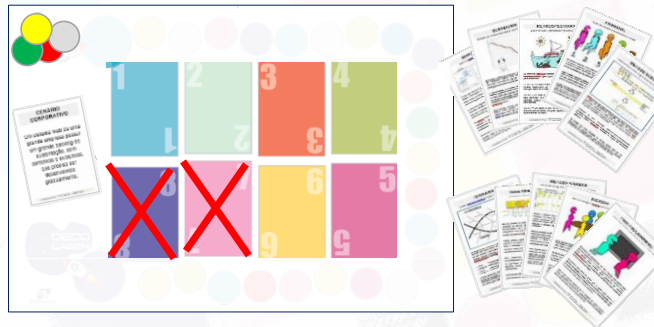


5W2H

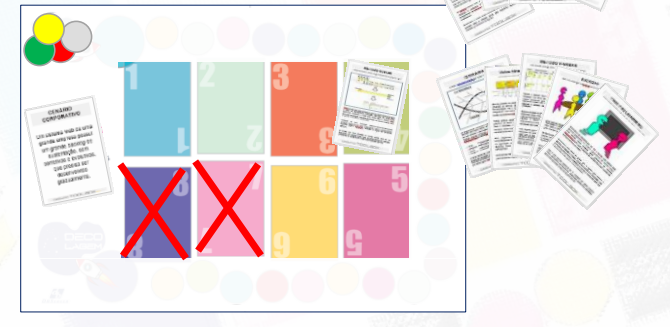




4º. Neste jogo poderão ser usadas até seis cartas de Toolbox para atender o cenário:



5º. Em sentido horário, um por vez coloca uma carta "útil" ao cenário:



6º. Vamos colocando e pondo em uma ordem relativa à sua execução:



7º. Após as 6 preenchidas, é possível propor a troca de ordem de uma carta:



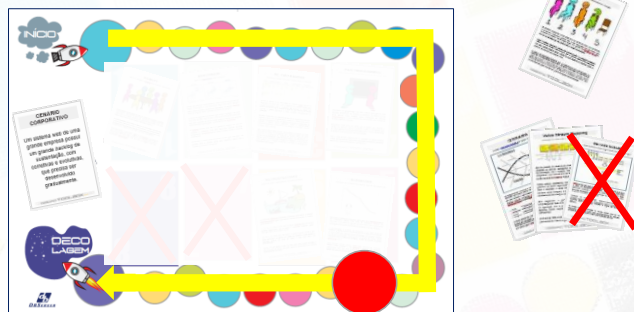
8º. Ao final, será a melhor sequencia disponível nas mãos dos jogadores:



9º. Ao final, cada carta na mesa vale 1 e se mais de um pratica a técnica, vale mais 2:



10º. As cartas usadas voltam para baixo do baralho, escolham outro desafio, novas cartas e reiniciamos:



JORGE H. N. AUDY
<http://jorgeaudy.com>

